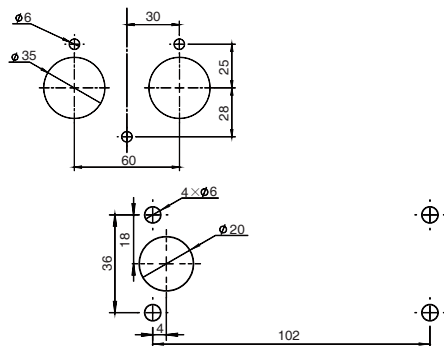


Side Mount Control Quick Start

*Before mounting the Side Mount Control, it is recommended to connect the entire equipment first. Check whether it is fully functional, and whether the communication cable is properly connected.

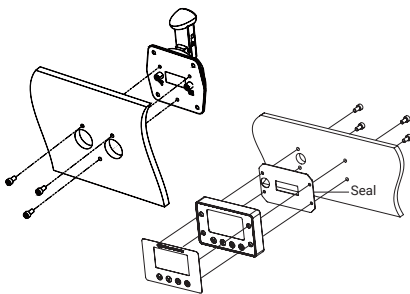
Step 1:

Drill some holes in the proper position as illustrated on the hull side. The reference sizes of the holes refer to the fixing guide of Side Mount Control. (Below figures are examples.)



Step 2:

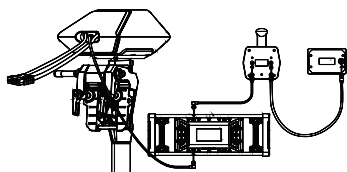
Mount the Side Mount Control on the hull referring to the following figure. (Other mounting mode refers to the *Section 2 Mounting* in the user manual. Below figures are for mounting from the inside.)



Step 3:

Use communication cables to connect the Side Mount Control to the machine.

Please connect the machine or the battery to the connector with the sign "S" and connect the display panel to the connector with the sign "M".



Step 4:

Ensure the version setting of the Side Mount Control is correspond to the model of the machine. (If not, please refer to *Section 2.4 Version Setting* in the user manual for version switching.)

```
→ Spirit1.0 <
Navy3.0
Navy6.0
Pod1.0
Pod3.0
```

*Right Side Mode is by default. If you need to use Left Side Mode, please refer *Section 2.5 Port or Starboard Side Setting* in the user manual.

*When not using ePropulsion Batteries, users should manually configure the batteries via Side Mount Control at the first time use, so the battery level will display more accurate.

Step 5:

Switch on the battery and the display panel. Then Start the machine.